

Imai Keller Moore Architects Independent Schools

Dublin School

Campus Planning
Dublin, NH

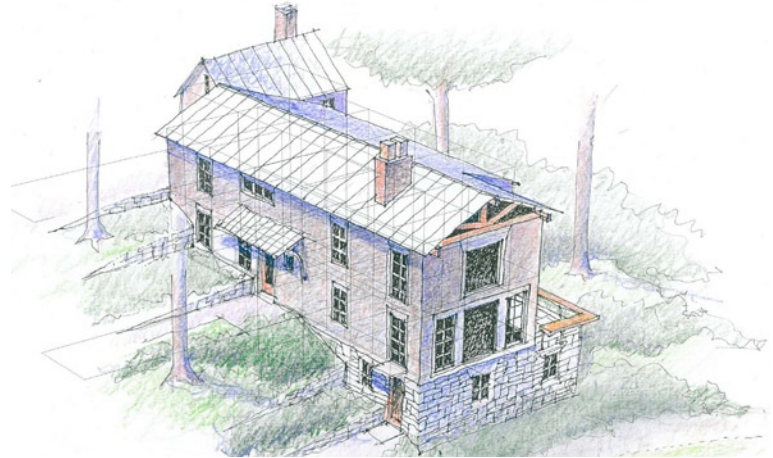
With several capital projects on the horizon, the Dublin School undertook a Master Planning Study to more fully understand opportunities to improve the campus environment. Key components of the Study were as follows:

- Restructure campus uses to make better use of adjacencies
- Create new campus outdoor spaces by the judicious arrangement of buildings
- Provide guidelines to promote a visually cohesive campus
- Enhance students' academic experiences with social and outdoor experiences
- Develop formal and informal meeting spaces in new and existing buildings

The Plan recommendations coordinated the following elements into a coherent vision for a walkable campus that can be developed over time and retain its special character :

- An improved Student Center
- Three new dormitories
- New classrooms
- New Visual Arts Building
- New Performing Arts Building
- All-School Meeting Space for 200
- Expanded Dining Hall
- Faculty Housing
- Administration Building improvements
- Pedestrian and vehicular circulation improvements
- Landscape and Open Space improvements

The Master Planning Study suggests a vision for the campus that is broad in scope but modest in its execution. It proposes scenarios that might be achieved over time, with flexibility to adapt as needs shift.



New dormitory (1) takes advantage of terraced hillside to connect campus spaces



A new landscape courtyard (2) formed by Lehmann Hall on the right and new Visual Arts building



A central green (3) as shown on a portion of the Master Plan with a new crescent path replacing the parking lot and roadway.